



Wilson Creek Regional WWTP Expands to Accommodate Rapid Growth

BRET ELLIS – NTMWD, WASTEWATER PROGRAM MANAGER

STEVE FROST – CAROLLO ENGINEERS, DESIGN MANAGER



Agenda



NTMWD Treatment and Wilson Creek WWTP

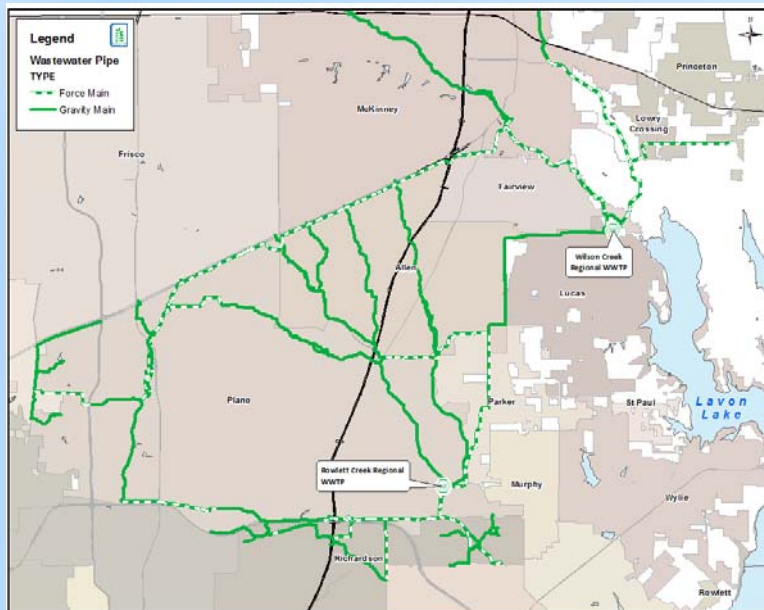


Project Delivery



Expansion Design Elements

NTMWD Wastewater System



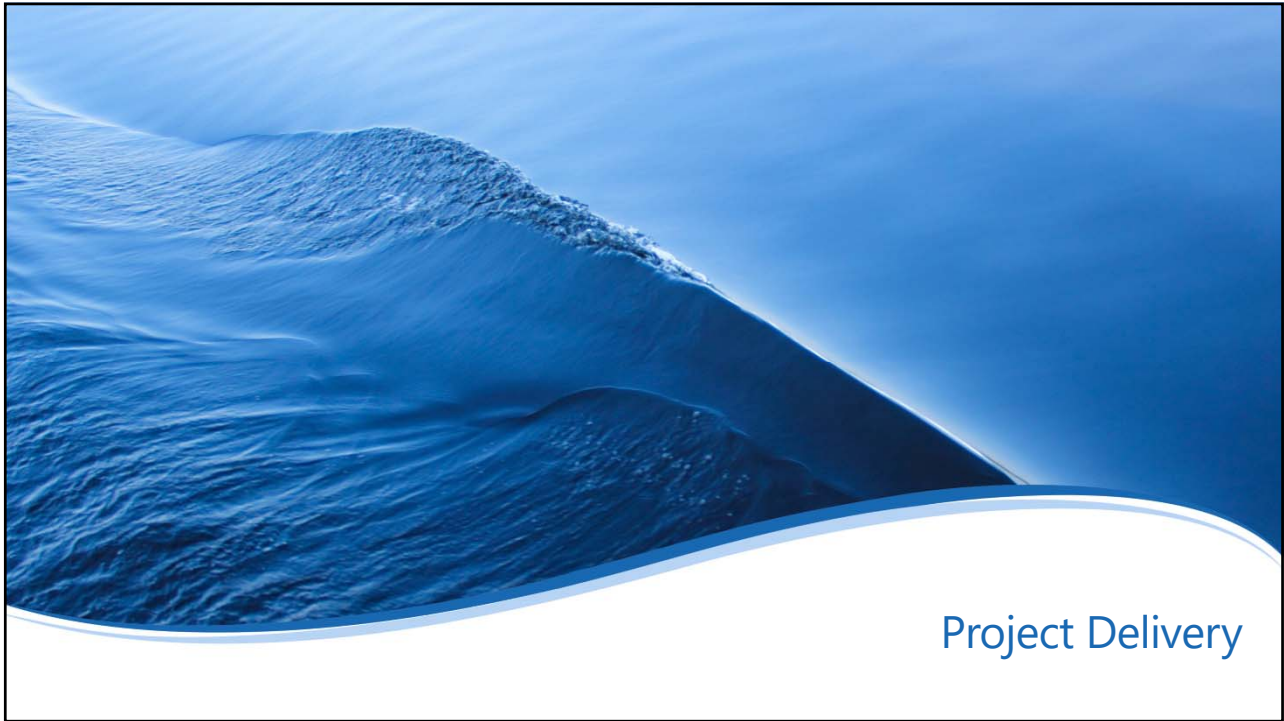
Wilson Creek Regional WWTP was constructed over five phases and has three treatment trains



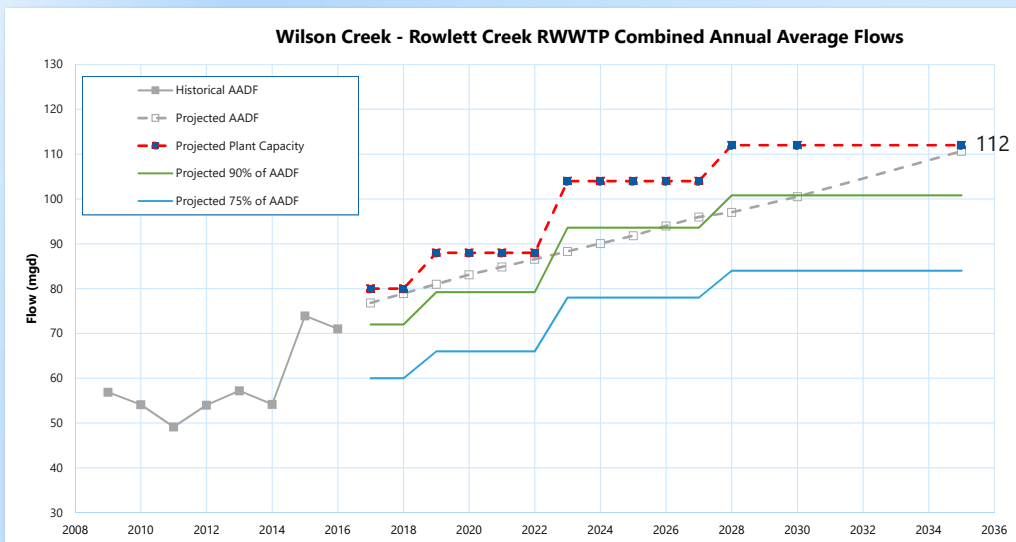
– Phase 1 construction in 1987



- Capacity: AADF 56 mgd and P2HF 204 mgd
- GBT thickening and BFP dewatering

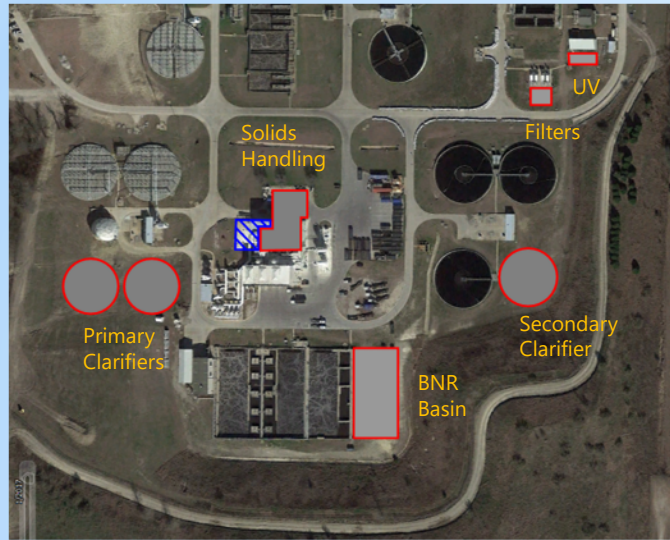


Rapid growth in the Wilson Creek service area resulted in the need for a fast-tracked expansion



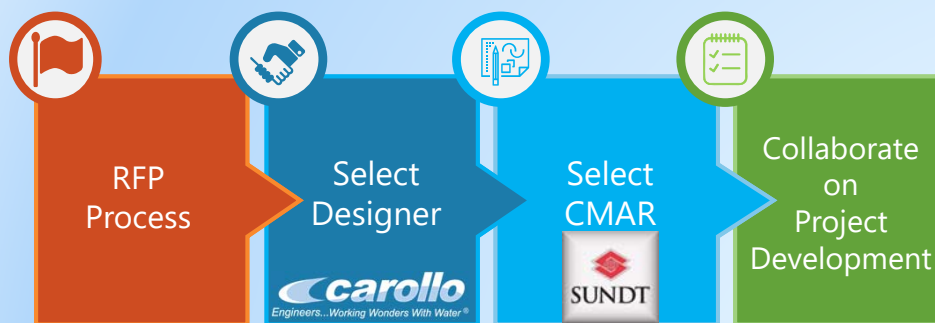
File:amg06

The Wilson Creek RWWTP expansion project expands the plant by 8 mgd



File name: ppt07

We needed a fast-track delivery schedule to meet our capacity requirements

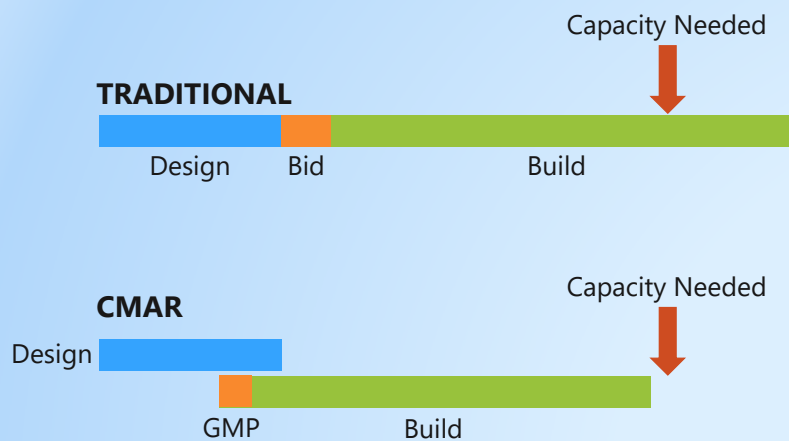


File name: ppt08

The CMAR delivery method offered some key advantages for our project

- 
- ✓ **Schedule Control**
 - ✓ **Scope Management**
 - ✓ **Cost Control**
 - ✓ **Risk Management**

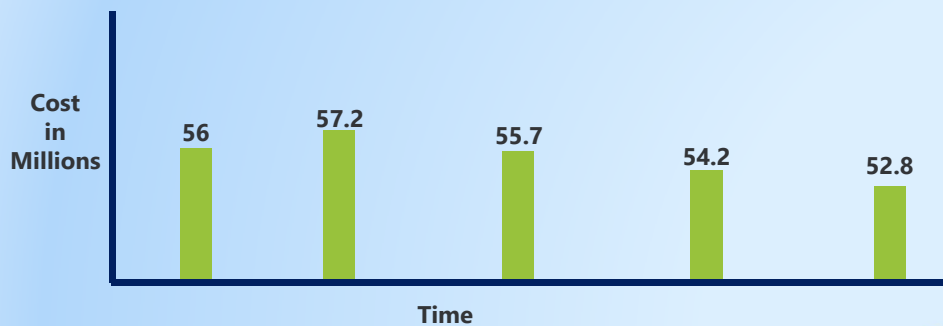
Schedule control was essential to meeting our aggressive project timeline



The CMAR delivery method offered some key advantages for our project

-
- ✓ Schedule Control
 - ✓ Scope Management
 - ✓ Cost Control
 - ✓ Risk Management

Collaboration at each cost model phase helped control the scope and budget



The CMAR delivery method offered some key advantages for our project

- ✓ Schedule Control
- ✓ Scope Management
- ✓ Cost Control
- ✓ Risk Management

File name: ppt/13

Our project MOPOs identified specific risks, impacts, and mitigation strategies



File name: ppt/14



Carollo evaluated the solids handling early in the project



Improve solids storage and reduce odors



Simplify hauling operation



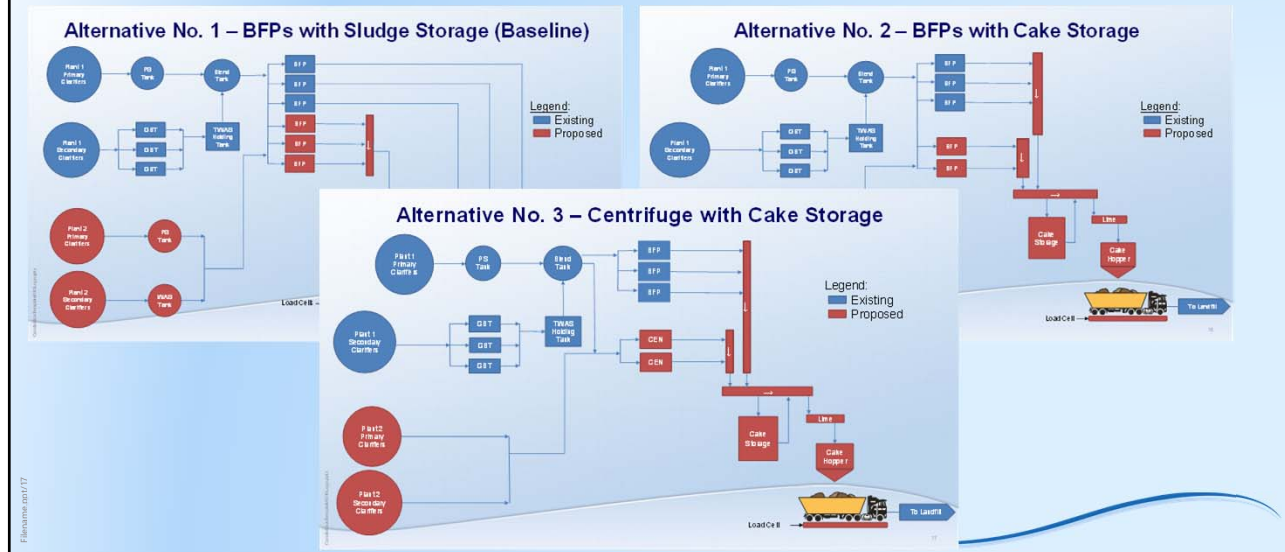
Real-time weighing



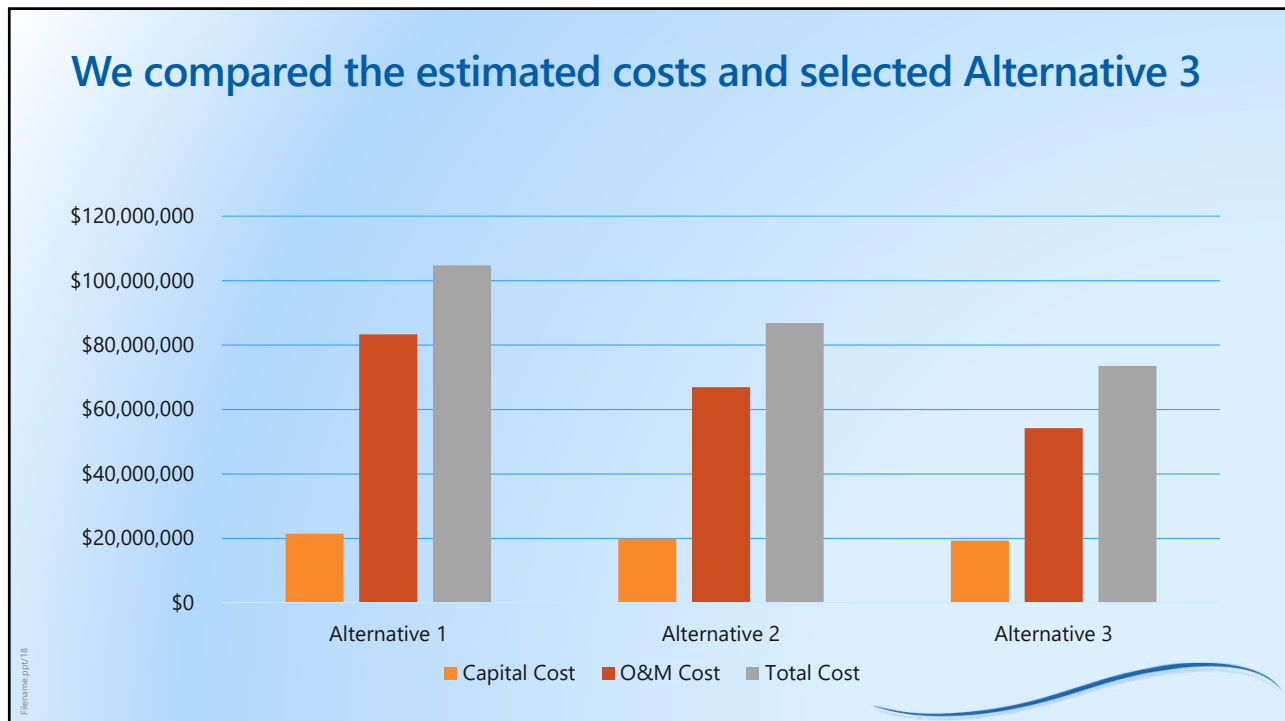
Plan for the future

File name: ppt16

We analyzed three solid handling alternatives



We compared the estimated costs and selected Alternative 3

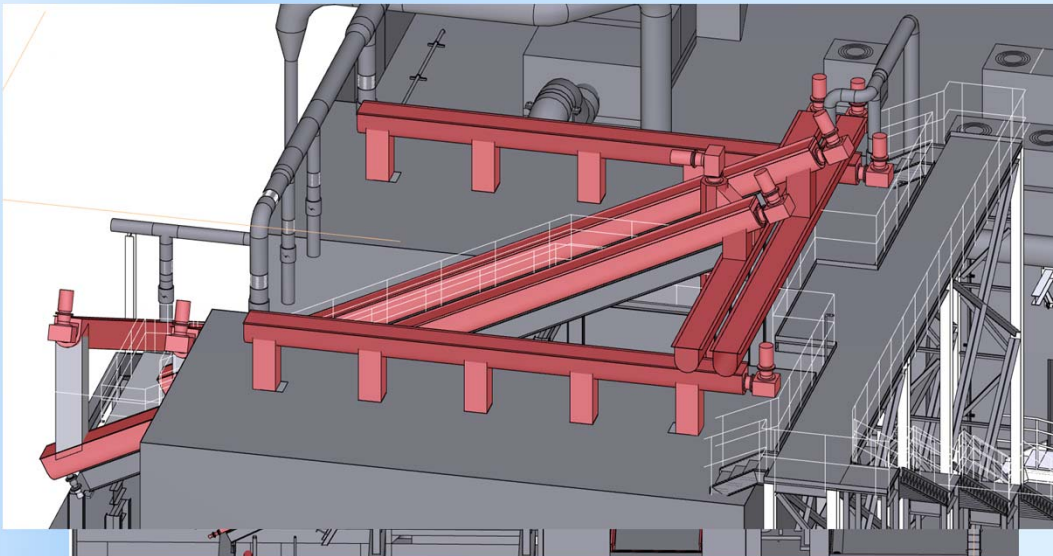


We did early procurement of long-lead solids handling equipment to avoid schedule delays



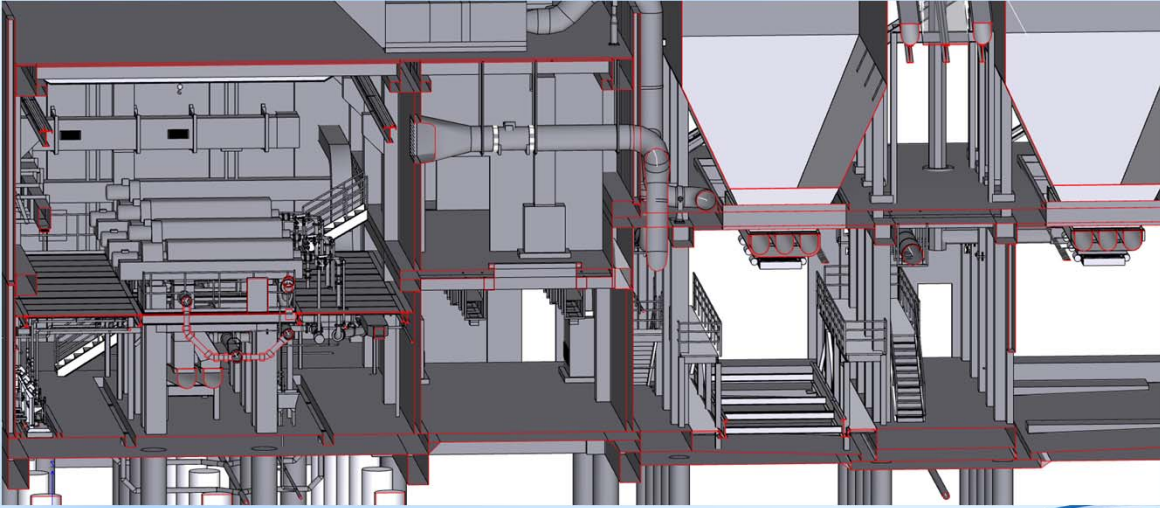
F:\enr\ppt\19

Procuring the solids handling equipment allowed us to work with the supplier to optimize the design



F:\enr\ppt\20

The solids design fulfills the needs identified early in the project



File name: ppt/21

The solids design fulfills the needs identified early in the project

Carollo evaluated the solids handling early in the project



**Improve solids storage
and reduce odors**



Simplify hauling operation



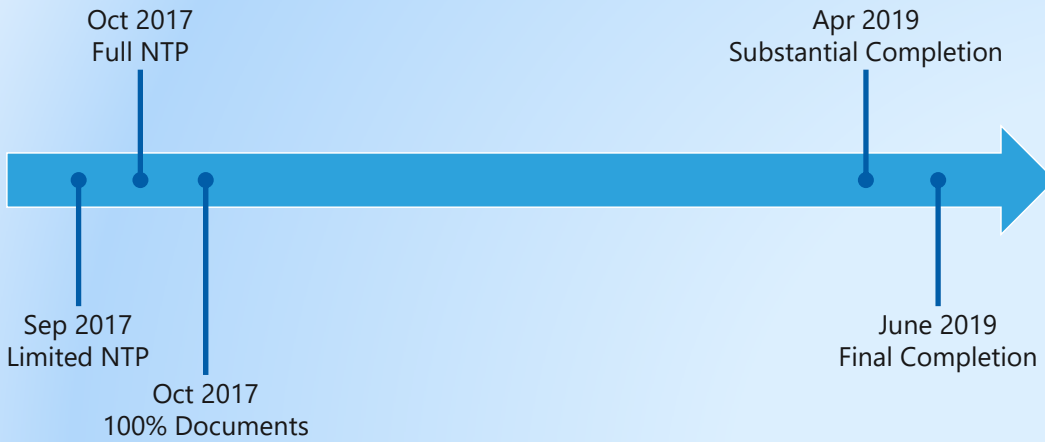
Real-time weighing



Plan for the future

File name: ppt/22

Where we are today...



File name: ppt/23

TACWA
TEXAS ASSOCIATION OF CLEAN WATER AGENCIES
A CLEAR COMMITMENT TO TEXAS WATERS

Wilson Creek Regional WWTP Expands to Accommodate Rapid Growth

BRET ELLIS – NTMWD, WASTEWATER PROGRAM MANAGER
STEVE FROST – CAROLLO ENGINEERS, DESIGN MANAGER